

iView MediaPro preferences

Additional setup options can be defined in the *Preferences* dialog box by choosing *Preferences* under Edit menu (Windows) or the iView MediaPro application menu (Mac).

General

At Startup: Select whether you want to open a new catalog, open the last catalog you used or do nothing every time you launch the application.

Double-Click: Select how MediaPro interprets double-clicking on a media item in a catalog. Alt+double-click (Mac: Option+double-click) will always launch the selected media file with its creator application.

Options: Display a useful description under the toolbar buttons; Sort media based on natural numerical order (i.e. 1,2,3..., 10,11); show warning dialogs appear when batching items or when removing items from a catalog or set; and Auto-save catalogs on timed schedule.

Field Names: Define which field names to use for describing IPTC annotations: IPTC Core names, those names used in iView MediaPro 2 or names used in Adobe Photoshop CS (see pg 147).

Dimensions: Define the unit of measure: pixels, inches, centimeters, points or picas.

Resolution: Change the default resolution from Pixels/Inch to Pixels/cm (centimeter).

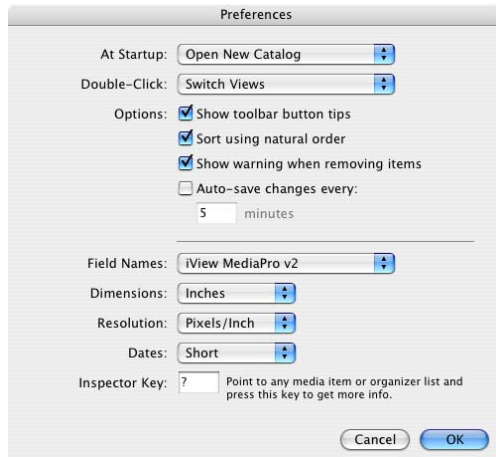
Date: Change the display of the date in various fields. Options include:

- *Long:* Friday, April 16, 2004
- *Short:* 4/16/04
- *Abbreviated:* Fri, Apr 16, 2004

Inspector Key: Place your cursor over any media item or Organize Panel term and press the key defined here to get more information.

Labels

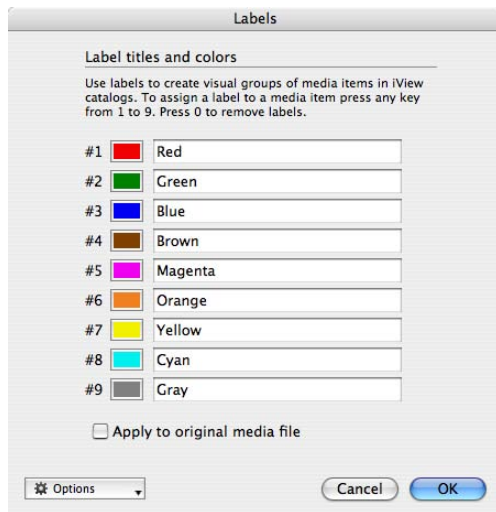
Color labels provide a method of a visual identification and classification of media files in your catalogs. The Labels & Colors preference enables you to globally customize the colors and names of labels. *For more on labels, see page 64.*



General preferences dialog.



Example of Inspector key in action.



Customize the color and names of labels.

Media Rendering

Images Panel

Note: The *Use built-in thumbnails* preference has moved to the Thumbnails & Previews function (Edit menu). *For more info, see page 34.*

Rendering: This pop-up menu gives you three options for the way MediaPro resamples images to display them at various sizes: *Nearest Neighbor* (faster but less precise), *Bilinear* (a medium-quality method) and *Bicubic* (slower, but better quality).

Color match: Turning this option on enables color profile matching in all views. If an image has an embedded ICC color profile, MediaPro uses it to create thumbnails and display images. Otherwise, MediaPro uses default document profiles chosen in the system's control panel.

Use alpha channel: Alpha channels are grayscale images used to hide/show certain portions of an image. In Adobe Photoshop, masks are stored in alpha channels. Turning this option on enables MediaPro to render thumbnails and media images using the alpha channel as a mask.

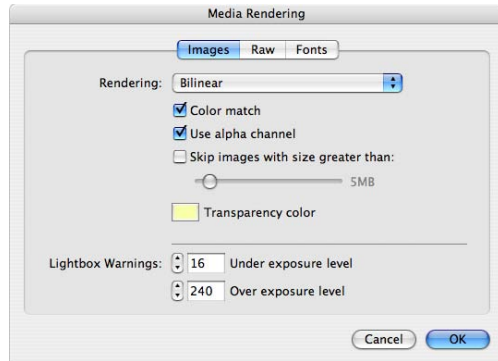
Skip images...: Allows you to place a limit on the size of images that the application will display in Media View and Slide Show mode. If an image is over the limit defined, MediaPro will not render it. This option will accelerate importing large images when viewed in Media View. Available range: 1 to 100 megabytes.

Transparency: Choose the background color used for transparent spaces in various image file types, such as GIF and Adobe Photoshop.

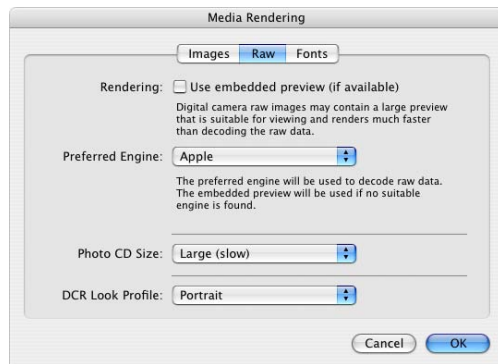
Light Table warnings: You may want to adjust the sensitivity of exposure warnings in the Light Table. Click the up or down arrows to adjust the under and over exposure values that trigger red and blue onscreen warnings.

Raw panel

Rendering: Most Raw image files may contain a large preview that is suitable for viewing and renders much faster than decoding the raw data. If you check *Use embedded preview*, this will speed up import and media rendering of Raw files.



Preferences: Media Rendering > Images panel



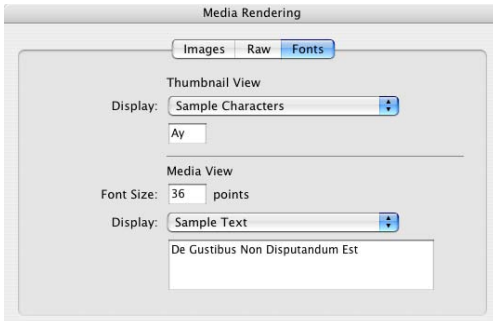
Preferences: Media Rendering > Raw panel

Otherwise, MediaPro will need to decode the Raw data in order to display the Raw files. On Windows and Mac platforms, MediaPro can decode and display Canon, Nikon and Kodak Raw files.

On the Mac, there are two rendering engines to choose from, when you have MediaPro set to decode and display Raw image data.

You can choose between the camera *Manufacturer* engine or the *Apple* engine. You must have Mac OS 10.4.2 or greater to enable the Apple decoding engine. By selecting *Manufacturer*, you can decode and display Canon, Nikon and Kodak Raw files. By choosing the *Apple* engine, you can decode and display Canon, Nikon, Minolta, Sony, Olympus and Adobe DNG Raw files.

In most cases, the Apple rendering engine is much faster at the decoding and displaying Raw files. In the future, the Apple engine may support



Preferences: Media Rendering > Fonts panel

other Raw formats. For list of supported cameras that create Raw files, visit this page:

www.apple.com/macosex/upgrade/cameras.html

Photo CD Size: Kodak Photo CDs contain images with a variety of dimensions and file sizes. This option tells MediaPro which size to catalog: *Small*, *Normal* or *Large* options. Smaller sizes will import much faster into MediaPro.

DCR Look profile: The *Look profile* pop-up menu adjusts the color tone of Kodak DCR images when rendered by MediaPro.

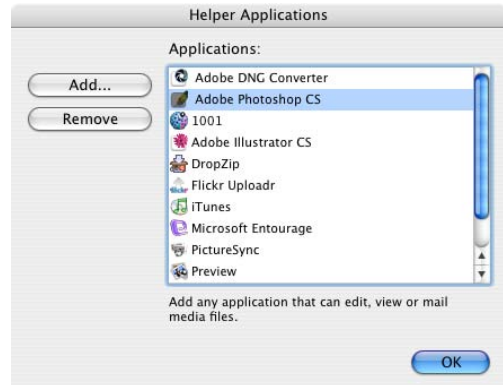
For more information on MediaPro's support of Raw formats, see Appendix D, page 149.

Fonts Panel

Media View: Fonts can be displayed as a standard *character set*, a *full character set*, or as *sample text* that you define. The *Font Size* option only applies to TrueType fonts. Bitmap fonts are displayed at the size defined by the font. These options also apply to the display of fonts in Slide Shows.

If you change the font display preference for Media View while your catalog is currently displaying Media View, you will have to switch to Thumbnail View and go back to Media View in order for the new preferences to be displayed.

Thumbnail View: Thumbnails of fonts can be displayed as the *font name* or as two characters of *sample text* that you define. If you change this option after importing fonts into a catalog, you will need to select all thumbnails, and choose *Rebuild Item* in the Action menu in order to have



Define Helpers in Preferences > Helper Applications.

iView MediaPro recreate the font thumbnail with the new settings. Thumbnail View settings also apply to List View.

Helper applications

When browsing or viewing files in a MediaPro catalog, it's likely that you may want to act upon a file in some way outside of the feature set that MediaPro provides – such as file editing or compression. To assist you, there is a function called *Open With Helper Application*.

Helpers are defined in *Preferences > Helper Applications*. This panel will let you choose media editors, utilities or viewers so that you may quickly access them via the pull-down menu in the application toolbar or through a contextual menu.

To add a Helper: Go to the *Helper Applications* dialog and click the *Add* button. Navigate to the application through the desktop and select it. When first launched, iView MediaPro will automatically scan your computer for Helpers, but you may want to add or remove some later.

Accessing Helper Applications: After selecting an item, you can execute an *Open With* command two ways: In the toolbar's icon pull-down menu (top), or through a contextual menu. Right-click (Mac: Ctrl-Click) to access a contextual menu.

The possibilities are limitless for using Helper applications in your workflow. For more information on using Helper apps, see page 115.