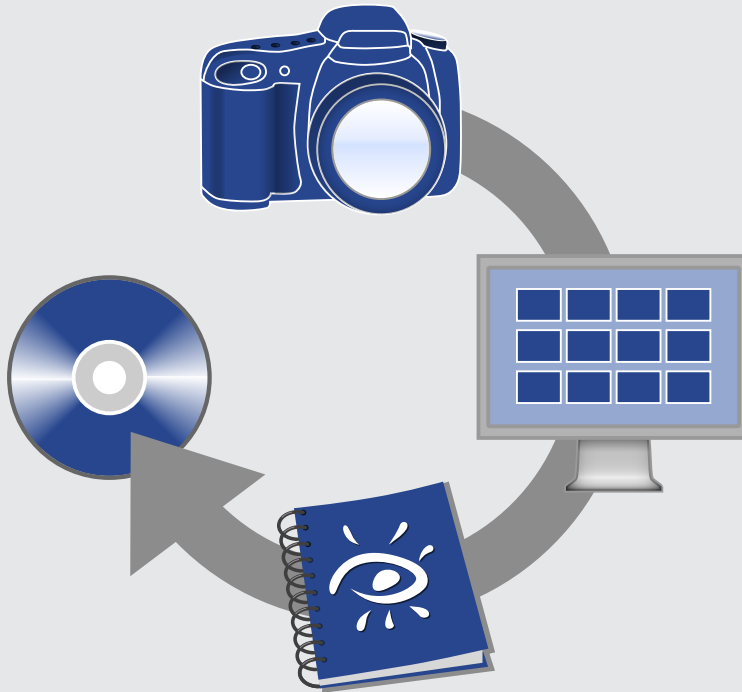


# iView® MediaPro™ 3

YOUR COMPLETE WORKFLOW SOLUTION



## Digital photo management using iView MediaPro 3 and Adobe Photoshop CS2

Automate image editing and file conversion using MediaPro with Adobe Photoshop droplets, Camera Raw plug-in and DNG Converter. Also: Streamline your metadata workflow.



## Overview

Many professional photographers use the image editing program Adobe Photoshop for various tasks in their digital photo workflow.

This solution guide covers several techniques for optimizing your photo management workflow with Photoshop and iView MediaPro.

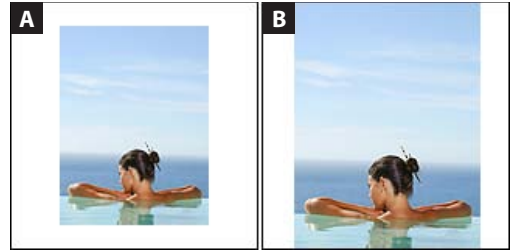
### View all layers of a Photoshop (PSD) file in Media View

1. Select a Photoshop file in your catalog and click on the Media View tab.
2. On the right side of the Header bar (Figure 1.1) the Pager tool will appear.
3. Use the arrows of the Pager tool to flip through the layers of the Photoshop file (Figure 1.2). The first layer is a composite of all layers of a Photoshop file.

### Assign a PSD layer as a thumbnail

Thumbnails for Photoshop files are based on a composite of all layers of the file. However, you can assign a specific layer as the thumbnail.

1. Select the PSD file in your catalog, go to Media View and use the Pager Tool to go to the layer you want to assign as the thumbnail.
2. In the Action menu, select *Rebuild Item*.
3. Return to Thumbnail View and you will see that the thumbnail has been reassigned to the specific layer.



**Figure 1.4**

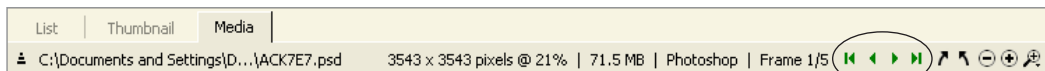
A. Thumbnail created by Adobe Photoshop CS2  
B. Thumbnail rebuilt by iView MediaPro

### Optimize thumbnails of PSD files

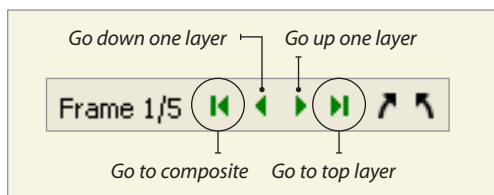
Photoshop embeds sharpened thumbnails when it saves files. This option is controlled in Photoshop's Preferences > File Handling (Figure 1.3). When *Always Save* is selected in the *Image Previews* drop down menu, Photoshop creates thumbnails at 160 pixels. This is the default size and there are no options for adjusting the size of embedded thumbnails. (The default thumbnail size for Adobe Photoshop 7.0 files is 128 pixels; for 6.0 files it is 112 pixels.)

If you have MediaPro's *Use built-in thumbnails* option checked, thumbnails for Photoshop files may appear smaller than the thumbnail cell container (Figure 1.4). When you rebuild it, the thumbnail size will match the rest of your catalog.

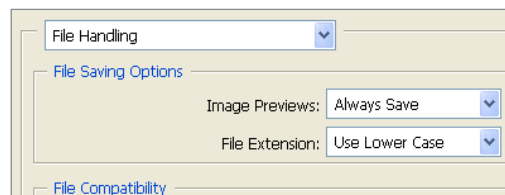
In the event that a Photoshop file does not have a built-in thumbnail, MediaPro will automatically create its own.



**Figure 1.1:** When a multi-layer Photoshop file is displayed in Media View, the Pager tool will appear in the Header bar.



**Figure 1.2:** Pager Tool functions



**Figure 1.3:** Photoshop's *File Handling* Preferences.

# Batching & Automation

When browsing or viewing images in a MediaPro catalog, it's likely that you will want to open these images with an editor such as Photoshop to make adjustments. To assist you, MediaPro has a function called *Open With Helper Application*.

Helpers are defined in Preferences > Helper Applications. This dialog will let you choose Photoshop and/or other applications so that you may quickly access them via the pull-down menu in the MediaPro toolbar.

## Assign Photoshop as a Helper Application

1. Select Edit > Preferences > Helper Applications. (On the Mac, it's under iView MediaPro menu > Preferences > Helper Applications). This dialog will let you choose Photoshop so that you may quickly access it via the toolbar or through a contextual menu.
2. Click *Add* in the *Define Helper Applications* dialog (Figure 1.5). Navigate to Photoshop in your Programs folder (Mac: Applications folder) and select the program.
3. Click *OK*. Photoshop will be added to the list in alphabetical order (Figure 1.6).

## Open images with Photoshop

1. Select a group of images in your catalog.
2. Choose Adobe Photoshop in the Open With menu in the toolbar (Figure 1.6), or through a contextual menu. Right-click (Mac: Ctrl-click) to access a contextual menu.
3. Photoshop will launch and open the selection of files.
4. Make corrections to the images, then save them (replace the existing files, or as a copy to a new folder).
5. When you go back to your MediaPro catalog, you will need to rebuild the images in order for the Photoshop edits to be reflected in the catalog thumbnails. To do this, select the edited images and choose *Rebuild Item* in the Action menu. Rebuilding thumbnails is only necessary when batching images in Photoshop. If

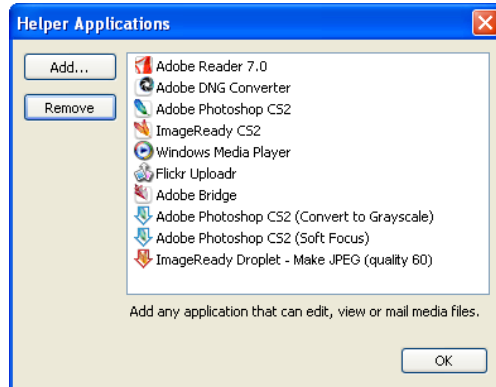


Figure 1.5: To add a Helper, click Add and navigate to the desired application on the desktop and select it.

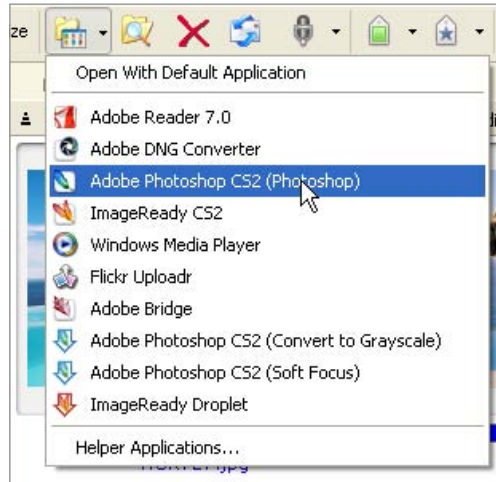


Figure 1.6: After selecting images, you can execute an Open With Helper command two ways: In the toolbar's icon (right) pull-down menu, or through a contextual menu. Right-click (Mac: Control-click) to access a contextual menu.

you are editing only one image in Photoshop, MediaPro will automatically update the thumbnail for the image.

6. If you saved the edited images to a new folder, they will need to be imported into the catalog. To automate this, turn on *Folder Watching* with *Auto Update* for the folder that the images were saved in.

## Automate processes using ImageReady & Photoshop droplets

In Photoshop, an action is a series of recorded commands that you can apply to a single file or a batch of files. Actions are the basis for droplets, which are small applications that automatically process all files that are dragged onto their icon.

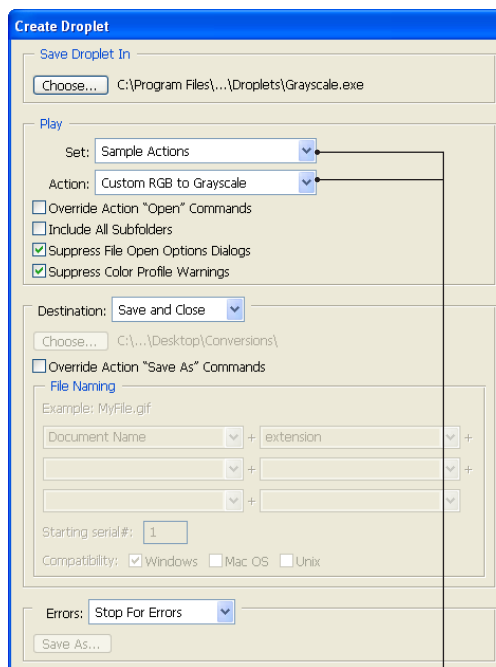
Droplets can be integrated into your workflow by assigning them as Helper applications. Using droplets can save you a substantial amount of time when used as a Helper in MediaPro.

### Create a droplet in Photoshop

The following is a quick example of creating a Photoshop droplet. For detailed instructions on creating a droplet with Photoshop, refer to Photoshop's Help documentation.

1. To start creating a droplet in Photoshop, select **File > Automate > Create Droplet**.
2. **Save:** Define the location on your desktop to save the droplet.
3. **Play:** In this section, you define the action that the droplet is based on. You can use any of the actions installed with Photoshop, or you can create your own actions. For this example, choose *Sample Actions* in the Set menu and *Custom RGB to Grayscale* in the Action menu (Figure 1.7).
4. **Destination:** Define what Photoshop should do after processing the image. *None* will leave the file open in Photoshop; *Save and Close* will save the file and close it; *Folder* will save the image as a new file in a folder of your choosing. If you select the last option, you must define a file naming convention in the boxes below. For this example, choose *Save and Close*.
5. Click **OK** to create the droplet. The droplet you have created will convert any color image file (such as JPEG, TIFF or Photoshop) to grayscale and save it, replacing the original. (See Figure 1.8 to see what droplets look like).

**Tip:** You can download additional Photoshop actions from web sites like Adobe Studio Exchange:



**Figure 1.7:** In these menus, define which action the droplet will be based upon.

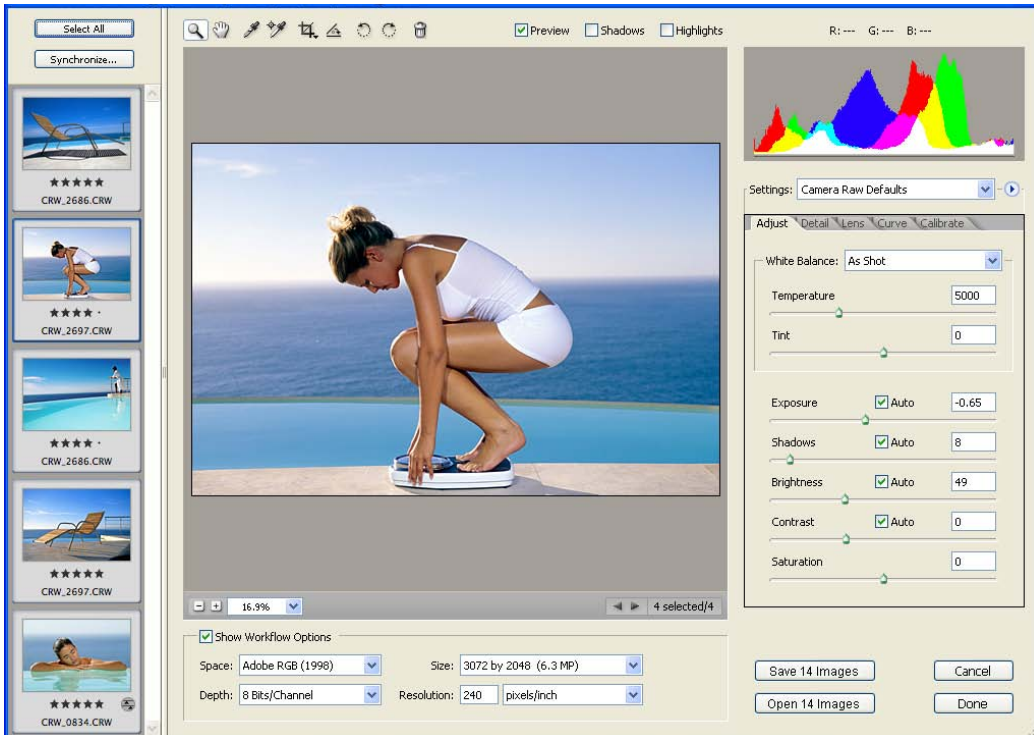


**Figure 1.8:** Examples of droplets created by Adobe Photoshop (blue) and ImageReady (Orange).

[www.adobestudioexchange.com](http://www.adobestudioexchange.com).

### Using Photoshop droplets in MediaPro

1. Add the droplet as a Helper application (see instructions on page 4).
2. Select a group of images in your catalog.
3. Choose the droplet in the toolbar's Open With menu.
4. Photoshop will launch, open the selection of image files and batch process them according to instructions in the droplet.



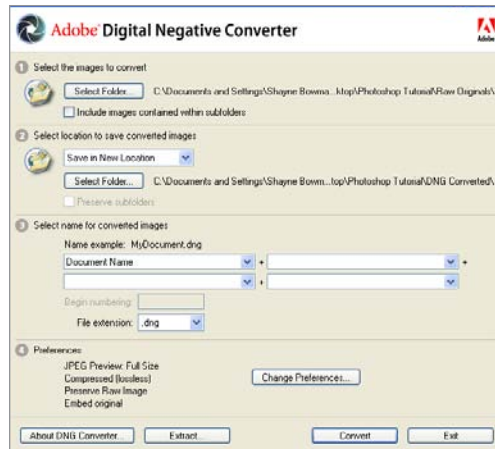
**Figure 1.9:** When you open a group of images with Photoshop, the images appear in a thumbnail list on the left.

## Batch convert Raw files with the Photoshop Camera Raw plug-in

1. Select a group of Raw files in your catalog.
2. Choose Adobe Photoshop in the Open With menu in the toolbar.
3. Photoshop will automatically launch and open the selection of files in the Camera Raw conversion dialog (*Figure 1.9*).
4. Each file can be individually processed or they can be batched and saved.

## Batch convert Raw files to DNG

1. Select a group of Raw files in your catalog.
2. Choose Adobe Digital Negative (DNG) Converter in the Open With menu in the toolbar.
3. DNG Converter will automatically launch and open the selection of files.
4. All files are batched and saved based on the chosen settings (*Figure 1.10*).

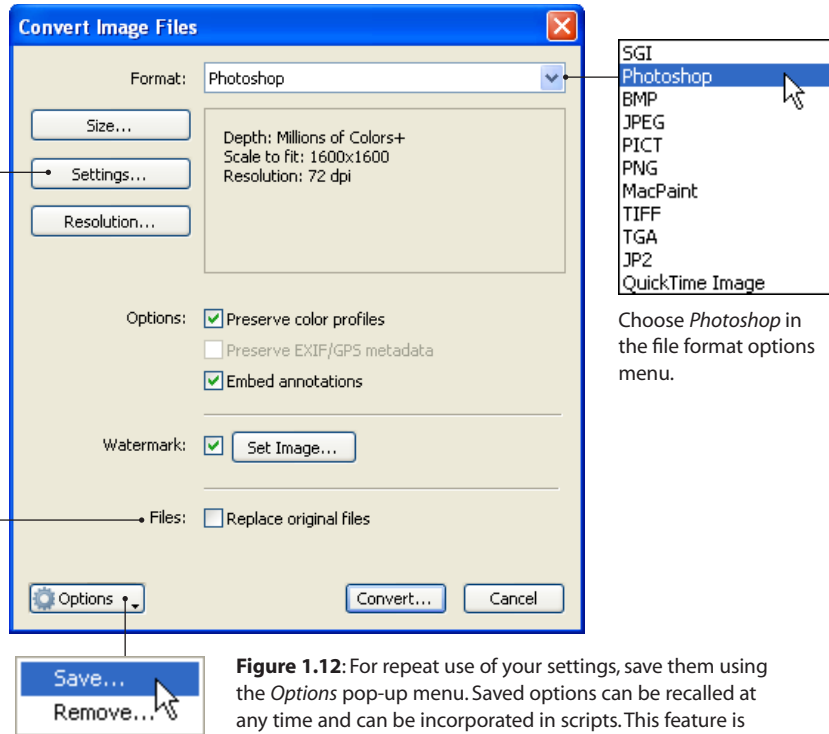


**Figure 1.10:** Digital Negative is Adobe's publicly available, archival format for camera Raw files. This program is free and is available for download from Adobe's web site. The Adobe Camera Raw plug-in (*Top*) can save Raw image data in the DNG format as well.

**Figure 1.11**  
Convert Images

**Settings:** Click the *Settings* button to adjust the color depth of the converted Photoshop file.

**Files:** Replace original files will replace the original with the converted Photoshop file.



**Figure 1.12:** For repeat use of your settings, save them using the *Options* pop-up menu. Saved options can be recalled at any time and can be incorporated in scripts. This feature is standard to MediaPro export functions.

## Batch convert images to the Photoshop (PSD) format

1. Select a group of images (JPEG, TIFF, etc.) in your catalog.
2. In the Action menu, select *Convert Image Files*. This feature will convert images into a new format, such as JPEG, TIFF, Photoshop, etc.
3. In the *Format* drop-down menu at the top of the dialog, choose Photoshop (Figure 1.11).
4. **Settings:** Click the *Size* button to resize the image or use the existing dimensions; Click the *Settings* button to adjust the color depth; Click the *Resolution* button to define a custom dpi for the converted Photoshop file.
5. **Options:** *Preserve color profiles* will embed the ICC color profiles into the exported image. This option is only available if you have color matching turned on in the Preferences > Media Rendering > Images dialog; Check

*Embed annotations* to write all IPTC/XMP Core annotations into each exported Photoshop file. EXIF/GPS metadata cannot be preserved when converting to the Photoshop format.

6. **Optional:** Apply a watermark to the exported Photoshop file by checking box and clicking on the *Set Image* button. For instructions on applying a watermark, see page 7.
7. Click the *Convert* button.
8. Define a folder where you want to save the converted files.

**Note:** When converting any Raw image files, MediaPro uses the large embedded preview as the image to be converted. The actual raw data is not converted.

For frequent use of this feature, you can save settings using the *Options* menu. Saved options can be incorporated into scripts (Figure 1.12).

Use buttons to select the previous or next catalog image as the alignment preview image.

**Figure 1.13**

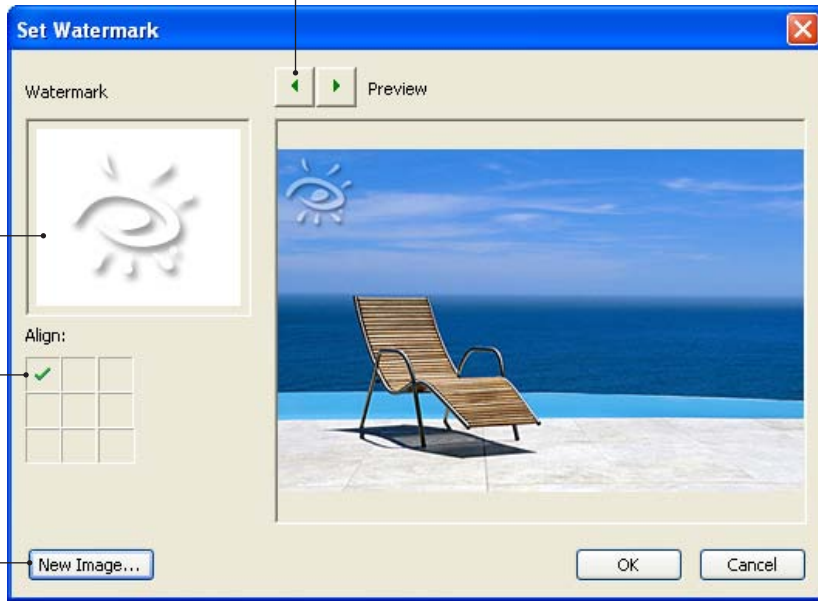
**Set Watermark:**

The preview of the watermark and the image will be blank until a watermark image is assigned.

Preview of currently assigned watermark.

**Align:** Click any of these boxes to adjust the relative alignment of the logo, where it will be overlaid on the exported image.

Click the *New Image...* button to choose a different image.



### Watermark converted images

iView MediaPro can export converted images with a visual watermark — a secondary image which is overlaid on the primary image, and provides a means of protecting the image. This is not the same as digital watermarks which are implemented algorithmically and are designed to be invisible.

### Create and set a watermark

1. Launch Photoshop. MediaPro will accept the TIFF, PSD, JPEG, PICT, PNG, BMP, GIF formats as watermark files. Note that the JPEG format does not support transparency. iView recommends PNG, TIFF or PSD for optimal results.
2. Create a new file. For this example, make it is 200 pixels wide and 50 pixels tall. Make it RGB with *Background Contents* set to *Transparent*.
3. Choose the Type tool and type something with the color set to Black.
4. Choose *Save*. Select TIFF as the format. There is no need to save alpha channel or layer info.
5. In the next dialog, choose your desired compression and check *Save Transparency*.

6. Return to MediaPro's Convert Images function, and in the *Set Watermark* dialog, select your TIFF file by clicking the *New Image...* button.

### Watermark options

The previous instructions will create an overlay where the logo's color is opaque (such as 100 percent black or white).

To alter the logo color's opacity and give it a transparent quality, adjust the layer's opacity in Photoshop to somewhere between 50 and 90 percent. To make it a little jazzier, as in the example shown above, add following after Step 3:

- a. Add a *Drop Shadow* filter to the text layer.
- b. Set filter color to white or black, or whatever color desired.
- c. You can adjust the opacity in the filter dialog to 75 percent for transparent quality.

Using a drop shadow will ensure your watermark is readable even if it falls in dark or light parts of an image.

# Annotations

## Using Photoshop metadata terminology in MediaPro

iView MediaPro and Adobe Photoshop CS2 support a set of pre-defined fields for annotating your media. This set, also known as IPTC/XMP Core metadata standard, enables you to define the author, event date, location, copyright and other metadata for your media files.

Some software programs use different names for the various IPTC/XMP field names. For example, Photoshop CS2 refers the IPTC Job Identifier field as “Transmission Reference.”

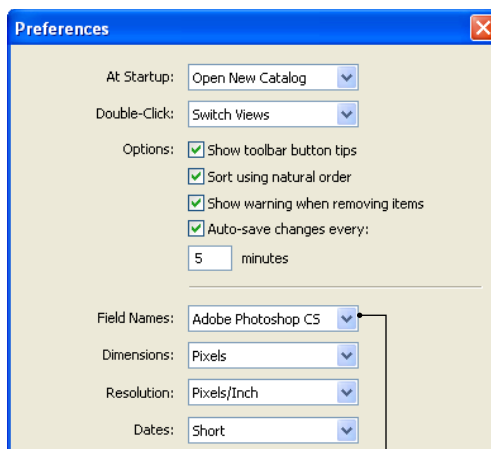
iView MediaPro 3 provides you with the option of choosing which field names to display throughout the MediaPro interface: The official IPTC Core names; those names used in iView MediaPro 2; or those used in Photoshop CS and CS2.

### To enable Photoshop metadata terms

1. Select Edit > Preferences > General. (On the Mac, it's under iView MediaPro menu > Preferences > General).
2. In the *Field Names* menu chose *Adobe Photoshop CS* (Figure 2.1.). This will change all annotations field labels to the terms that Photoshop uses in the *File Info* dialog and in Adobe Bridge.

Field names do not affect how annotations are written (synchronized) into media files. It is merely a visual preference designed to help you choose the appropriate field when annotating files.

Figure 2.2 lists the field names used by MediaPro and their corresponding names in the IPTC/XMP standard, as well as in Photoshop CS & CS2. Because the names of each annotation are not integrated into the data, other applications may refer to an annotation by a different name.



**Figure 2.1:** Choose Photoshop in the *Field Names* menu.

iView MediaPro2	Photoshop CS, CS2	IPTC/XMP Core
Label	Urgency	Label
Title	Headline	Headline
Product	Document Title	Title
Genre	Category	Category
Intellectual Genre	Intellectual Genre	Intellectual Genre
Event	Event +	Event
Event Date	Date Created	Date Created
Author	Author	Creator
Credit	Credit	Provider
Source	Source	Source
Copyright	Copyright Notice	Copyright Notice
Transmission	Transmission Ref.	Job Identifier
Rights Usage Terms	Rights Usage Terms	Rights Usage Terms
URL	Copyright Info URL	URL
Location	Location	Location
City	City	City
State	State/Province	State/Province
Country	Country	Country
ISO Country Code	ISO Country Code	ISO Country Code
Instructions	Instructions	Instructions
Status	Status +	Status
Writer	Description Writer	Description Writer
People *	People +	Contact *
Categories *	Supplemental Cat. *	Categories *
Keywords *	Keywords *	Keyword *
Scenes *	Scenes *	Scenes *
Subject Codes *	Subject Codes *	Subject Codes *
Caption	Description	Description

\* Supports multiple entries in field; + Supported in Photoshop CS & CS2 via iView plug-in (see page 11). For additional information on IPTC/XMP metadata, refer to the official web site: <http://www.iptc.org/>

**Figure 2.2:** Metadata field names table

## Using Adobe metadata templates for batch annotating in MediaPro

MediaPro and Photoshop both have metadata templates — a tool for saving a set of frequently used metadata and applying them to images.

In all of MediaPro's metadata template menus, you can access any templates you may have previously created with Photoshop (Figure 2.3).

These templates are accessible in MediaPro's *Metadata Template* menu in the Info Panel. They are also accessible in the *Annotate* menu in several import functions (Figure 2.5).

### Batch annotate using an Adobe Photoshop metadata template

1. Select a group of images in your catalog.
2. In the drop-down menu at the top of the Info Panel (Pencil icon), choose a metadata template in the menu (Figure 2.3).
3. A dialog will appear showing the metadata that will be assigned by the template. You can turn some fields off to keep them from being applied to the images. When you are done, click the *Apply* button (Figure 2.4).
3. Click the checkmark icon (☑) at the top of the Info Panel to save the annotations. In the confirmation dialog, select *Apply to All* items. Now all selected images have the metadata assigned by the template.

### To remove Adobe Metadata Templates

1. Locate Adobe's templates folder:

#### Mac OS X

{User Directory}/Library/Application/Adobe/XMP/Metadata Templates/

#### Windows

\\Documents and Settings\\<user>\\Application Data\\Adobe\\XMP\\Metadata Templates\\

2. Move the template file out of the folder or delete the file.

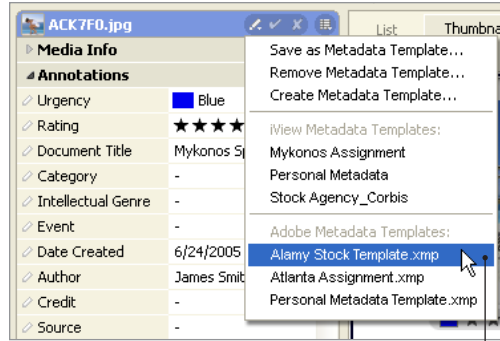


Figure 2.3: Adobe Metadata Templates are accessible in the Info Panel's Metadata Template menu.

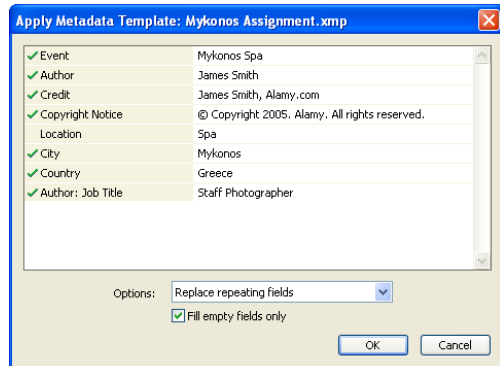


Figure 2.4: When applying a template, you can turn some fields from the template off.

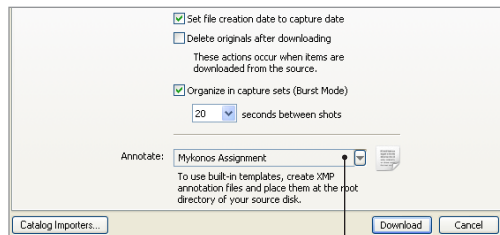
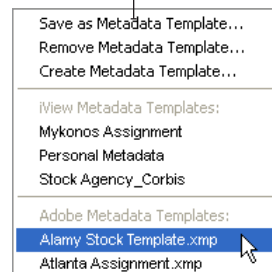
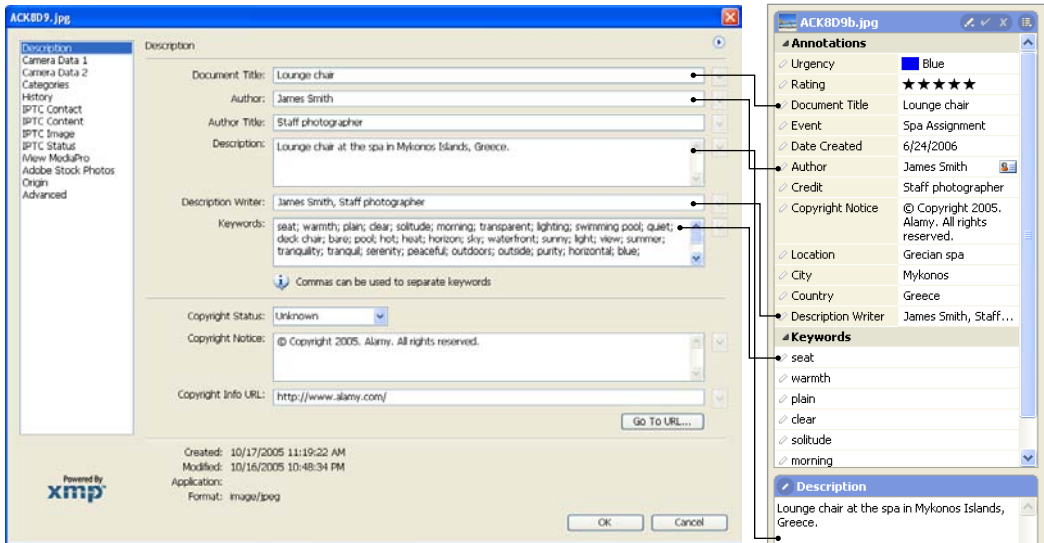


Figure 2.5: Adobe Metadata Templates can be accessed in the *Annotate* menu of the *Download and Import* dialogs (From Camera, Disk or URL).





**Figure 2.6:** If you enter annotations in MediaPro and export them to the original files, other applications such as Adobe Photoshop can read the metadata. Conversely, annotations added in Photoshop can be imported by MediaPro.

## Round trip metadata: Syncing

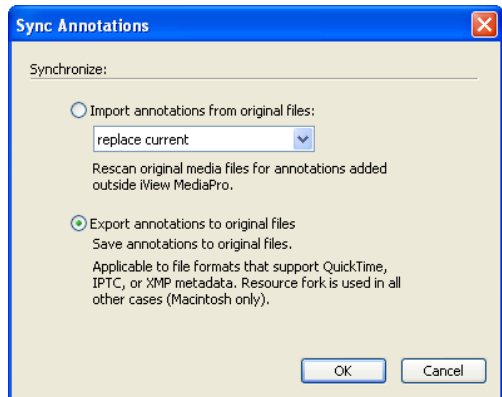
Adding metadata to images in a MediaPro catalog does not automatically embed (write) the metadata into the original file. The metadata only exists in the catalog.

To write or embed metadata into an image, use the *Sync Annotations* function in the Action menu. This command allows you to embed annotation information from the catalog into the original files. It also allows you to import annotations, by rescanning files for metadata added outside MediaPro with another application.

This function is particularly useful, as MediaPro allows you to view, classify and batch annotate a large number of images and then export the changes to the original files, saving hours of time opening and editing individual files.

Metadata that have been written into the image can be read by other applications that can read the IPTC, QuickTime or XMP metadata standards, such as Adobe Photoshop (Figure 2.6).

MediaPro supports the reading and writing of IPTC/XMP metadata to JPEG, TIFF and Photoshop



**Figure 2.7:** With this function, you can export (or write) metadata from the catalog to original files. You can also import metadata from original files.

formats only. MediaPro also can synchronize metadata in four Raw image formats: Nikon, Canon, Kodak and Adobe Digital Negative (DNG).

## To embed (write) annotations in images

1. Select an image or group of images.
2. Enter all your annotations.
3. Choose Action > Sync Annotations.
4. Click the radio button for *Export annotations to original files* (Figure 2.7). The amount of time it takes to write annotations to files depends on the number of files selected. Regardless, it should be relatively fast.

## To import annotations from files

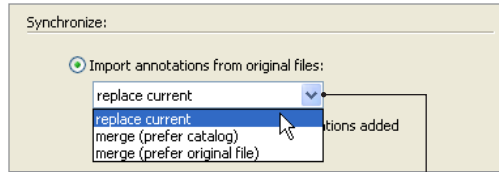
This function is useful if you have edited annotations in a file outside of MediaPro in another application, such as Photoshop. Using this function will instruct MediaPro to reimport the annotations for that file.

1. Select an image or group of images.
2. Choose Action > Sync Annotations.
3. Click the radio button for *Import annotations from original files* (Figure 2.8).
4. Choose between one of three options for importing annotations. *Replace current* clears any current annotations and replaces them with all annotations from the original file. With the *Merge* options, you need to define which set of annotations take precedence over another when there is a conflict on single-value annotations. For example, suppose both the original file and the catalog item contain a *Title* annotation. Since there is only one *Title* annotation per item, you need to decide which one to use. Multi-value annotations, such as keywords and categories, are always merged together.

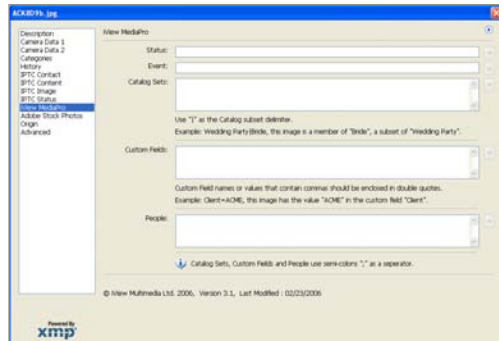
## MediaPro's special metadata plug-in for Photoshop CS & CS2

The *Status*, *Event*, and *People* IPTC annotation fields are not supported by Adobe Creative Suite. To extend support of these fields to Adobe Photoshop CS & CS2, iView provides a custom plug-in so that you can view and edit these annotations in the *File Info* dialog of Photoshop.

This plug-in also extends support of MediaPro



**Figure 2.8:** When importing annotations, you must choose between one of three importing options.



**Figure 2.9:** iView metadata panel in Photoshop CS2.

*Catalog Sets* and any custom annotation fields created in MediaPro.

## Plug-in installation:

1. A file called "iViewPanel.txt" is automatically installed in your computer during the installation of MediaPro.
2. The file is placed in one of these locations:
  - Mac OS X**  
{Root Volume}/Library/Application Support/Adobe/XMP/Custom File Info Panels  
or: {User Directory}/Library/Application/Adobe/XMP/Custom File Info Panels
  - Windows**  
\Program Files\Common Files\Adobe\XMP\Custom File Info Panels  
or: \Documents and Settings\<user>\Application Data\Adobe\XMP\Custom File Info Panels
4. Open a file in Photoshop. Choose File > File Info. You will notice that there is a new panel call *iView MediaPro* (Figure 2.9).

## Star ratings in Adobe Bridge and iView MediaPro 3

Star ratings provide a ranking system for images in your catalogs.

Ratings in MediaPro are mapped to Adobe's XMP standard for ratings. If you assign a rating to an image in MediaPro and synchronize (write) the metadata to the original file, the rating will be displayed in Adobe Bridge (*Figure 2.10*).

Conversely, images marked with star ratings in Adobe Bridge will maintain those star ratings when imported into MediaPro catalogs.

## Color labels in Adobe Photoshop and iView MediaPro 3

Labels in MediaPro are mapped to the IPTC/XMP standard's *Urgency* annotation field. When annotations for images in a catalog are synchronized (written) to the original files, all images tagged with a label will have the corresponding label number (1-9) written into the *Urgency* field.

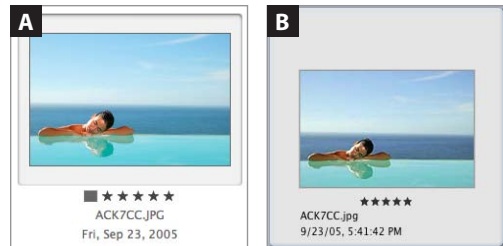
For Photoshop CS & CS2 users, these are the same values used in the *Urgency* field of the File > File Info > Origin panel (*Figure 2.11*).

Even if you have customized the colors and names of labels, the values 1-9 are written into the *Urgency* field in order to comply with the IPTC/XMP metadata standard. If the *Urgency* field is important to your workflow, you might customize the label names to match the standard (*Figure 2.12*).

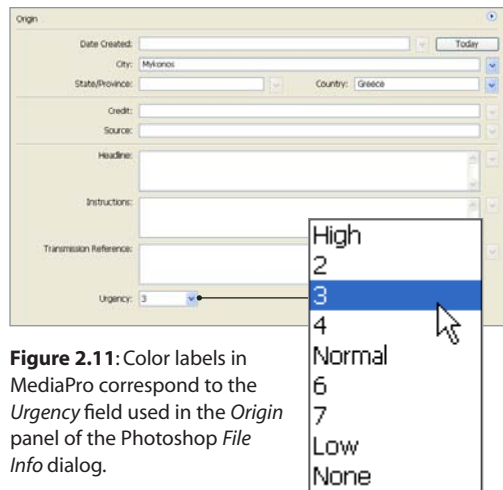
## Annotating DNG files in MediaPro

**Import:** MediaPro can import annotations on all Raw formats, including Adobe Digital Negative (DNG) files. MediaPro can also display the embedded preview saved inside DNG files. MediaPro also imports metadata from any image file that has an XMP sidecar.

**Export:** MediaPro can embed/write annotations into four Raw formats: Canon, Nikon, Kodak and Adobe Digital Negative (DNG) files. MediaPro does not write annotations in other Raw formats. MediaPro also does not write metadata into XMP sidecar files.



**Figure 2.10:** Ratings marked in Adobe Bridge (B) are viewable in your MediaPro catalog (A). If you assign a rating in MediaPro and synchronize (write) it to the file, it will be shown in Adobe Bridge.



**Figure 2.11:** Color labels in MediaPro correspond to the *Urgency* field used in the Origin panel of the Photoshop File Info dialog.



**Figure 2.12:** MediaPro's color labels can be named to match the values in Photoshop's *Urgency* field.

# Appendix: Troubleshooting

## Why can't I use Photoshop CS as a helper application? (Mac only)

There can be a problem with any application, including MediaPro, that tries to use Photoshop CS as a helper application. Photoshop CS will launch but the selected images will not open.

The solution is to reinstall Photoshop. You may find other answers by searching Adobe's support web site.

## This layered Photoshop file was not saved with a composite image.

If an imported Photoshop image displays this message in MediaPro, "This layered Photoshop file was not saved with a composite image," the PSD file was not saved with *Maximize Compatibility* turned on. This can be fixed two ways.

1. When saving files in Photoshop, make sure the *Maximize Compatibility* option is checked (Figure 3.1).
2. In Photoshop's Preferences > File Handling dialog, set the *Maximize PSD File Compatibility* drop-down menu to *Always* to automatically save PSD files with maximum compatibility (Figure 3.2).

## Alpha channel in Photoshop file incorrectly displayed (typically yellow).

Some Photoshop documents with alpha channels can be incorrectly displayed. MediaPro sometimes interprets the alpha channel as a transparent layer. MediaPro displays transparencies as a specific color and by default this is yellow. See example in Figure 3.3.

To correct this, turn on the *Use Alpha Channel* setting (Figure 3.4) in the Preferences > Media Rendering > Images dialog.

All newly imported Photoshop files will be displayed properly. To correct existing thumbnails you need to select them and choose *Rebuild Item* in the Action menu.

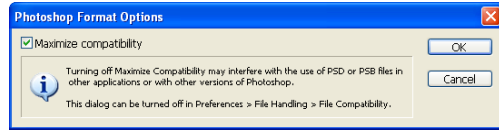


Figure 3.1: When you save PSD files in Photoshop make sure *Maximize compatibility* is checked to ensure proper rendering of these files in iView MediaPro.

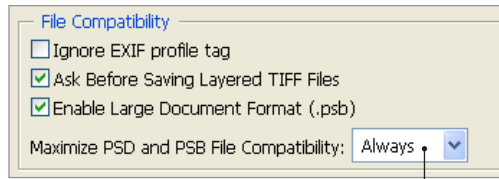


Figure 3.2: To ensure your PSD files are save with maximum compatibility, choose *Always* in this menu of Photoshop's Preferences > File Handling dialog.

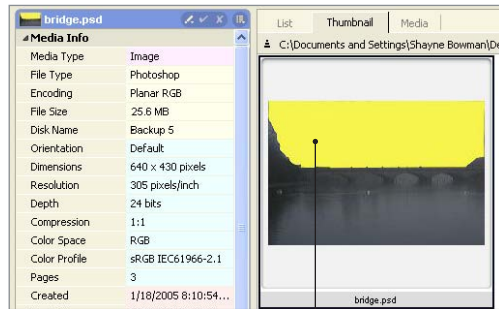


Figure 3.3: The yellow area is an example of alpha channel displayed incorrectly.

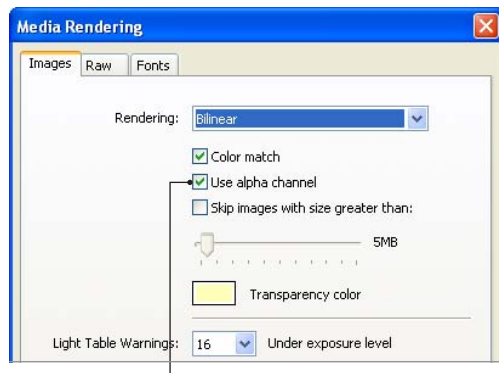


Figure 3.4: In order to properly display Photoshop files with alpha channels, make sure this box is checked.

## Copyright & Trademark Notice

Published September, 2006. Written by Shayne Bowman.

### **Microsoft®**

© 2006 Microsoft Corporation. All rights reserved.  
One Microsoft Way, Redmond, Washington 98052-6399 U.S.A.



Photographs courtesy Alamy.  
Online at: [www.alamy.com](http://www.alamy.com)

To find out more about iView MediaPro, please visit:  
<http://www.iView-multimedia.com>

---

THIS TUTORIAL COVERS:



iView MediaPro



Adobe DNG Converter



Adobe ImageReady CS2



Adobe Photoshop CS2



Camera Raw.plugin



Droplets

---

SOFTWARE BY

**iView Multimedia Ltd.**

A Microsoft Subsidiary  
[www.iView-multimedia.com](http://www.iView-multimedia.com)

**For additional instructions on  
using iView MediaPro, please visit:**  
<http://www.iView-multimedia.com/support/>

---

SOFTWARE BY

**Adobe**

[www.adobe.com](http://www.adobe.com)

**For additional instructions on  
using Adobe Photoshop, please visit:**  
<http://www.adobe.com/support/>

---