

## How to automate processes using Nik filters with iView MediaPro

In Photoshop, an action is a series of recorded commands that you can apply to a single file or a batch of files. Actions are the basis for droplets, which are small applications that automatically process all files that are dragged onto their icon.

Using droplets can save you a substantial amount of time in your workflow when used as a Helper Application in MediaPro.

### Create a Photoshop action from a Nik filter

1. Open an image.
2. In the Actions palette (Window > Actions), choose New Action from the Actions palette menu. Enter a name for the action and choose a set from the pop-up menu (Figure 1.1).
3. Click Record. The Record button in the Actions palette will turn red (Figure 1.2).
4. Perform the tasks you want to record, in this case, the application of a Nik filter. In the Filter menu, Nik filters are located at the bottom of the list (Figure 1.3). Choose a filter from the Nik Color Efex Pro 2.0 submenu.

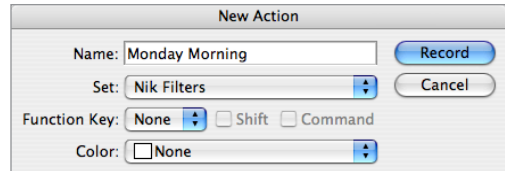
**Important Tip:** While recording, do not choose a filter from the Color Efex Pro palettes that are launched via the File > Automate menu. Photoshop will not be able to record the action if the filter is accessed this way.

5. Make adjustments to the Nik filter settings.
6. To stop recording, either click the Stop button, choose Stop Recording from the Actions palette menu, or press the Esc key.
7. The recorded action will now appear in the Actions palette.

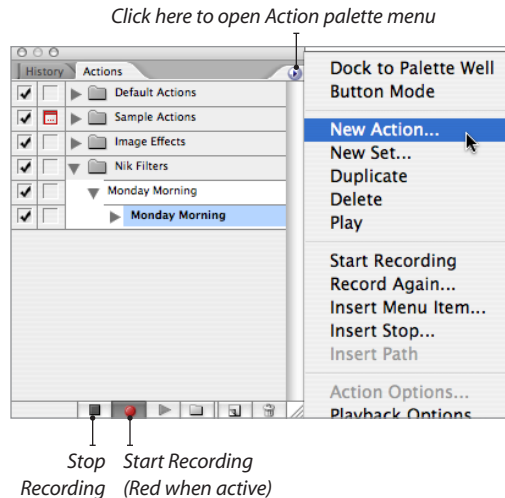
**Tip:** For detailed instructions on creating an action with Photoshop, refer to Photoshop's Help documentation.

### Create a Photoshop droplet from the action

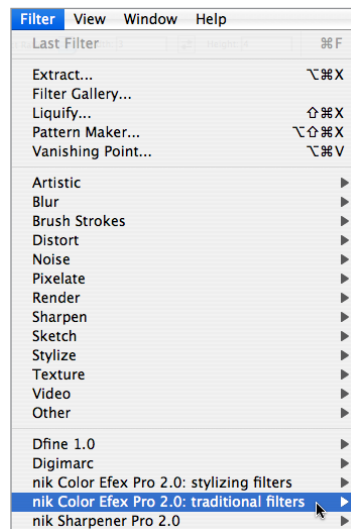
1. To start creating a droplet in Photoshop, select File > Automate > Create Droplet.
2. Save: Define the location on your desktop to save the droplet.



**Figure 1.1:** Use this dialog to define your action options.



**Figure 1.2:** To start recording an action, you can click the record button at the bottom of the Actions palette, or you can choose Start Recording from the palette menu (above).



**Figure 1.3:** Nik filters are located at the bottom of the Filter menu. Use filters in this list when recording actions.

3. *Play*: In this section, define the action that the droplet is based on. You can use any of the actions installed with Photoshop, or you can create your own actions. For this example, we've chosen *Nik Filters* in the Set menu and *Monday Morning* in the Action menu (Figure 1.4).
4. *Destination*: Define what Photoshop should do after processing the image. *None* will leave the file open in Photoshop; *Save and Close* will save the file and close it; *Folder* will save the image as a new file in a folder of your choosing. If you select the last option, you must define a file naming convention in the boxes below.
5. Click *OK* to create the droplet. The droplet you have created will apply the Monday Morning Nik filter to an image file using the settings defined in the action.

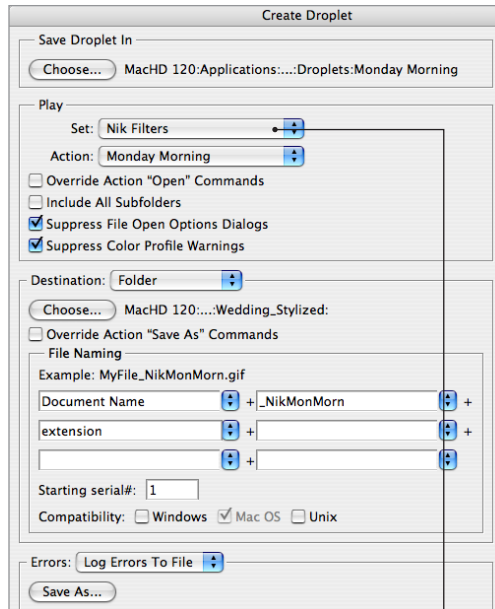
**Tip:** For detailed instructions on creating a droplet with Photoshop, refer to Photoshop's Help documentation.

### Assign the Photoshop droplet as a Helper Application in MediaPro

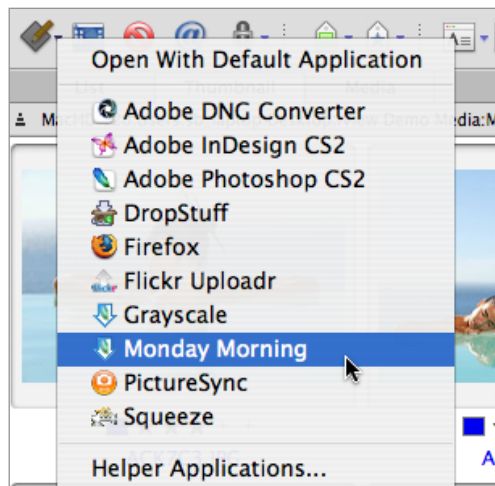
1. Select *Edit > Preferences > Helper Applications*. (On the Mac, it's under *iView MediaPro menu > Preferences > Helper Applications*). This dialog will let you choose a Photoshop droplet so that you may quickly access it via the toolbar.
2. Click the *Add* button. Navigate to and select the Photoshop droplet you created.
3. Click *OK*. The droplet will be added to the list in alphabetical order.

### Process images with droplet

1. Select a group of images in your catalog.
2. Choose the droplet in the *Open With* menu in the toolbar (Figure 1.5).
3. Photoshop will launch and process the selection using the settings defined by the droplet.
4. If you saved the processed images to a new folder, they will need to be imported into the catalog. To automate this, turn on *Folder Watching with Auto Update* for the folder that the images were saved in.



**Figure 1.4:** In these menus, define which action the droplet will be based upon.



**Figure 1.5:** After selecting images, you can execute an *Open With Helper* command two ways: In the toolbar's icon (right) pull-down menu, or through a contextual menu. Right-click (Mac: Control-click) to access a contextual menu.