

# Export Features

iView MediaPro can export and convert your media files in a variety of ways, by selecting options from the Make menu.

## HTML Gallery

With this export function, you can output a catalog of images and movies as a web site. Photographers, illustrators and designers can use this option to easily create a portfolio web site of their work. QuickTime movies can also be exported to HTML galleries.

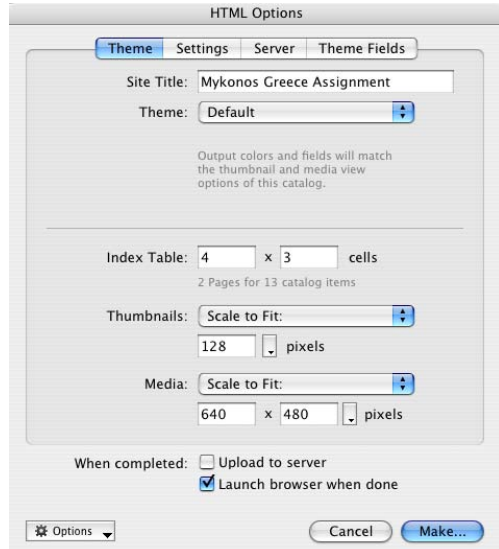
Typically, an exported HTML gallery looks similar to the Thumbnail and Media Views of your catalog. It contains an table of thumbnails which, when clicked in a web browser, will take you to a larger image.

iView MediaPro offers you two options when you create HTML galleries:

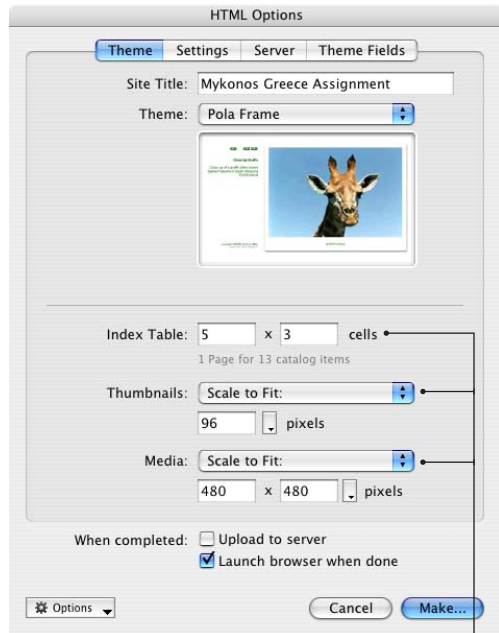
1. You can use a default theme to create a web site based on the *View Options* of the Thumbnail and Media Views in your catalog. Or you may use any of the visual themes provided with the application.
2. You can use your own Themes, which can be created before exporting and saved inside the user-defined Plug-Ins > HTML Templates folder (see page 5). iView MediaPro uses a different template for the index and media views of your gallery, and offers a rich vocabulary that can be used to extract catalog information (fields, thumbnails, etc.), as well as a high-level tags for navigation, date, time, etc. Creating themes requires HTML editing skills. To learn more about creating themes and templates, see page 102.

## Create a gallery

1. **Launch an iView MediaPro catalog** of photos, illustrations, movies or any media file that can be distributed on the web. MediaPro will export only the visible items in the catalog. So make sure the items you want to export are

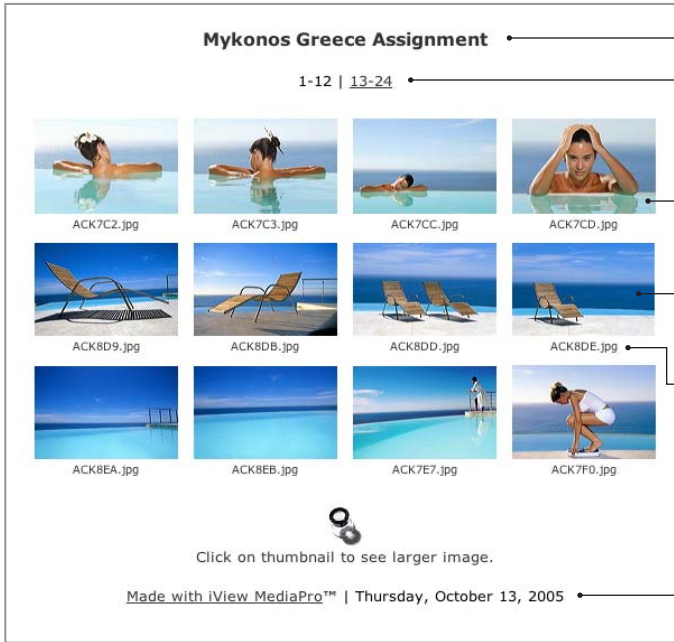


HTML Options: Theme panel, with Default chosen



HTML Options: Themes have pre-defined table grids, thumbnails and media sizes. However, you can customize to your liking by modifying these fields.

## Index Page



### Site Title

**Index page links:** The number of thumbnails (across and down) that appear on an HTML Index page.

**Thumbnails:** All of these images are automatically hyperlinked to their respective media pages.

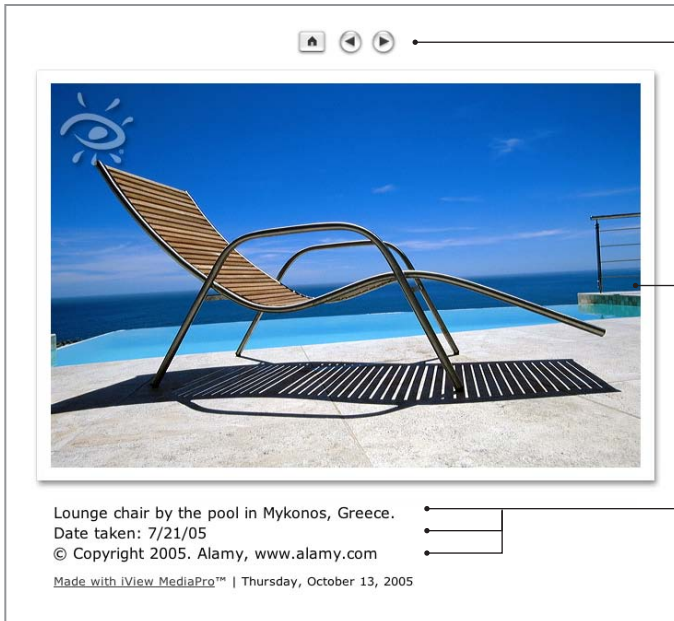
**Index Table:** The number of thumbnails (across and down) that appear on an HTML Index page.

### File Name

**Tip:** To reduce the loading time of your web pages, try to include less than 25 images on a single index page. Also, you might try a smaller thumbnail size.

**In some themes, the gallery's creation date is added automatically.**

## Media Page



**Navigation:** On Media pages, the web site viewer can advance through the gallery using the previous/next links, or they can return to the Index page of the gallery. In some themes (like the one shown left), icons can be used in place of these links.

**Media size** is defined by the theme chosen. Each theme's media page template has HTML Engine Directives that define media image size.

**Media info:** If included in the theme design, descriptions and associated metadata (such as EXIF or IPTC fields) can appear on Media pages.

displayed in the media viewing area before you create the gallery. When ready, choose Make > HTML Gallery.

## 2. Choose a Theme:

In this dialog, you can define what your web gallery will look like.

**Site Title:** This text will appear at the top of the index page in your gallery. If you don't want a title, leave this field blank. Some themes do not require a site title.

**Index Table:** Customize how many thumbnails, across and down, will appear on the Index page in a gallery.

**Theme:** Choose from a selection of preset themes or use *Default* to create your web site based on the *View Options* of the Thumbnail and Media Views in your catalog. If you use *Default*, make sure to choose the desired index table, Thumbnail and Media size options. All other themes have pre-defined tables and media sizes that are designed for optimal output. You can change the options, however some themes are written to work with specific defaults and altering those would produce odd results. If a produced HTML gallery looks incorrect try remaking it with the default settings.

## 3. Adjust your Settings

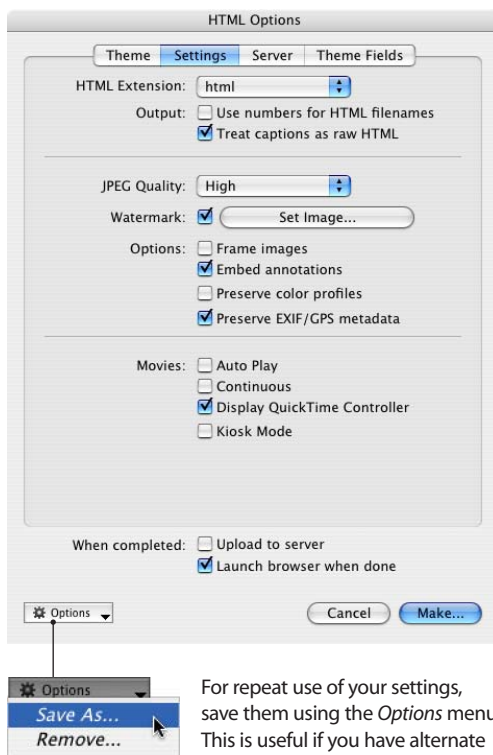
**HTML Extension:** Defines the suffix of the HTML filenames. Options include: htm, html, shtml, asp, php, xml.

**Output:** *Use numbers for HTML filenames* uses a numerical increment (1,2,3...) for HTML filenames instead of the media filename. *Treat captions as raw HTML* enables you to use HTML code, such as `<b></b>`, in the *Description* annotation field.

**JPEG Quality:** Choose the level of compression applied to thumbnails and media images. MediaPro now offers the option to set a custom target size for exported images. If you choose a target file size, MediaPro will dynamically adjust the compression level in order for the exported images to meet or be less than the target size.

**Watermark:** MediaPro exports images with a visual watermark — a secondary image which

## HTML Options: Settings panel



For repeat use of your settings, save them using the *Options* menu. This is useful if you have alternate settings using the same theme.

is overlaid on the primary image. See instructions for using watermarks on page 101.

**Frame images:** Choosing this option places a 1 pixel black border around each exported thumbnail and media image.

**Embed annotations:** MediaPro will embed all IPTC/XMP Core annotations into each exported image.

**Preserve color profiles:** MediaPro will embed the ICC color profiles into each exported thumbnail and media image.

**Preserve EXIF/GPS metadata:** MediaPro will embed the EXIF and GPS digital camera metadata into all exported media images.

**Movies:** These options adjust the properties of QuickTime movies on Media pages. *Auto Play* will automatically play a movie, once it's loaded

in a browser; *Continuous* will make the movie play in a loop; *Display QuickTime Controller* toggles the standard QuickTime controls for a movie on and off. *Kiosk mode* hides the options to save movies and change QuickTime settings from within a browser window.

**4. Define FTP Server Settings:** MediaPro can now upload (or FTP) exported web galleries without using third-party software. This panel provides you with the options to define the FTP server address, user name, password and the directory that you want the gallery uploaded to. You can also define a preview web address (URL) that will launch in a browser when the upload is complete.

**5. Enter Theme Fields:** Some themes have variables that you can enter in this panel. For example, you might have a generic theme for your professional assignments. This theme might have special theme fields for you to enter the client's name, job number and assignment details. This information will then appear on the exported web pages.

**6. When completed:** Before creating your gallery, there are two final options to review. In order for MediaPro to upload an exported gallery, the *Upload to server* box must be checked. Check *Launch browser when done* to have MediaPro launch the exported web gallery in the system's default web browser.

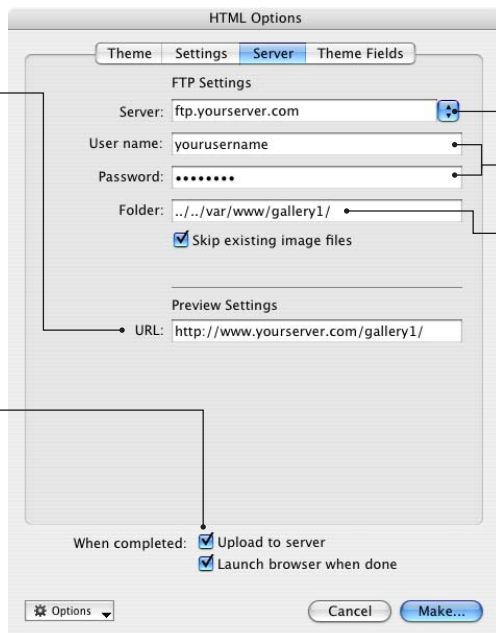
**7. Create:** After defining your settings, click *Create*. The amount of time it takes for iView MediaPro to create a gallery can vary depending on the number of images, their original size and the export size. The gallery will launch in your web browser after export, if that option is selected.

**8. Optional - Upload to server:** Once MediaPro has exported the gallery, a dialog will display saying "Gallery build is completed. Do you wish to upload (X) files to the server?" Click OK, and the progress bar panel will display the progress of each file as its being uploaded to your server. The number of files to be uploaded may seem like a lot, but many of them are small (such as thumbnails) and will upload quickly.

### FTP Server Settings

**Preview:** In this field, write the complete URL for the exported gallery. Make sure that you have typed the same upload folder name that you designated in the *Folder* field.

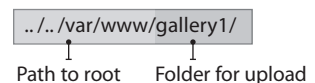
**Upload to server:** In order for MediaPro to upload an exported gallery, the *Upload to server* box must be checked.



**Server:** Enter the FTP address for your server. For example: ftp.ourmedia.org. As various servers are defined, they are stored in this drop-down menu for later reuse.

Enter the user name and password information for your FTP server.

**Folder:** In this field you are defining two pieces of information. First is the path to the web root directory of your account on the server. The second component is the directory for your gallery. If you do specify a folder that does not already exist MediaPro will create it.



**Skip existing image files:** Check this box if you have already uploaded your gallery images and are simply reuploading the HTML.